

# Hemlock Cliffs



USDA Forest Service

Hoosier National Forest

3/2013

## A Special Place

Hemlock Cliffs is a valley of special beauty in southern Indiana. A cool climate, created by the box canyon shape, sandstone rock formations, and seasonal waterfalls is responsible for the unique trees and plants that grow here.

Purchased in 1963 by the US Forest Service, Hemlock Cliffs has been a popular destination for people seeking tranquility, and a chance for reflection from within a cool rock shelter or along the shady stream.

## Geology, Plants, and Wildflowers

The area features sandstone rock outcrops, overhangs, cliffs, rock shelters, and ravines. The rock you see is sandstone of the Tar Springs Formation. Much of the sandstone is "Honeycombed" by weathering of iron ores. Springs, small caves, and subterranean drainage conduits are in the underlying limestone.

Lush vegetation is found along the cliffs, waterfalls and canyon floor. Hemlock, a tall evergreen with short needles and small cones, thrives in the canyon's cool climate. Wintergreen, a rare plant, is also found here. Wild geranium, French's shooting star, mountain laurel, and liverwort are some of the other plants of interest found here.

## Early Inhabitants

Archaeological excavations indicate Native American occupation as early as 10,000 years ago. Throughout the canyon are rock shelters, which undoubtedly provided cover and defense to the early occupants of this area.

## Hiking Trail

A 1-mile hiking trail leads you down into the canyon under a lush canopy of large trees, through rock shelters, and past high seasonal waterfalls. Parts of the trail are steep and slippery when wet, so use caution. It could take two leisurely hours to complete the loop.

## Safety

Use caution during hunting seasons. Blaze orange clothing is recommended (do not wear white) during deer season.

Ticks and chiggers are common in southern Indiana. Take precautions by avoiding tall grass and thick brushy areas.

Loose limbs and hazard trees can fall on the trail at anytime, especially on windy days.



## Emergencies

- Nearest public phone is in Paoli, IN
- The nearest hospital is located in Paoli, IN
- Crawford Co. Sheriff: 812-338-2802 or 911.
- IN Conservation Officers: 812-837-9536.

## Restrictions

- Motorized vehicles are prohibited, except on designated roadways.
- Foot traffic is restricted from some areas for resource protection.
- Rappelling is prohibited in designated area for resource protection (see map)
- Archaeological sites and artifacts may not be disturbed.

## Directions

From SR 237, take Union Chapel Road west 2.6 miles to the intersection with Eckert-Hatfield Roads. Continue on Hatfield Road 2.1 miles to parking area. GPS Coordinates for the Trail-head: 38°16'38.777"N, 86°32'20.317"W

## For More Information:

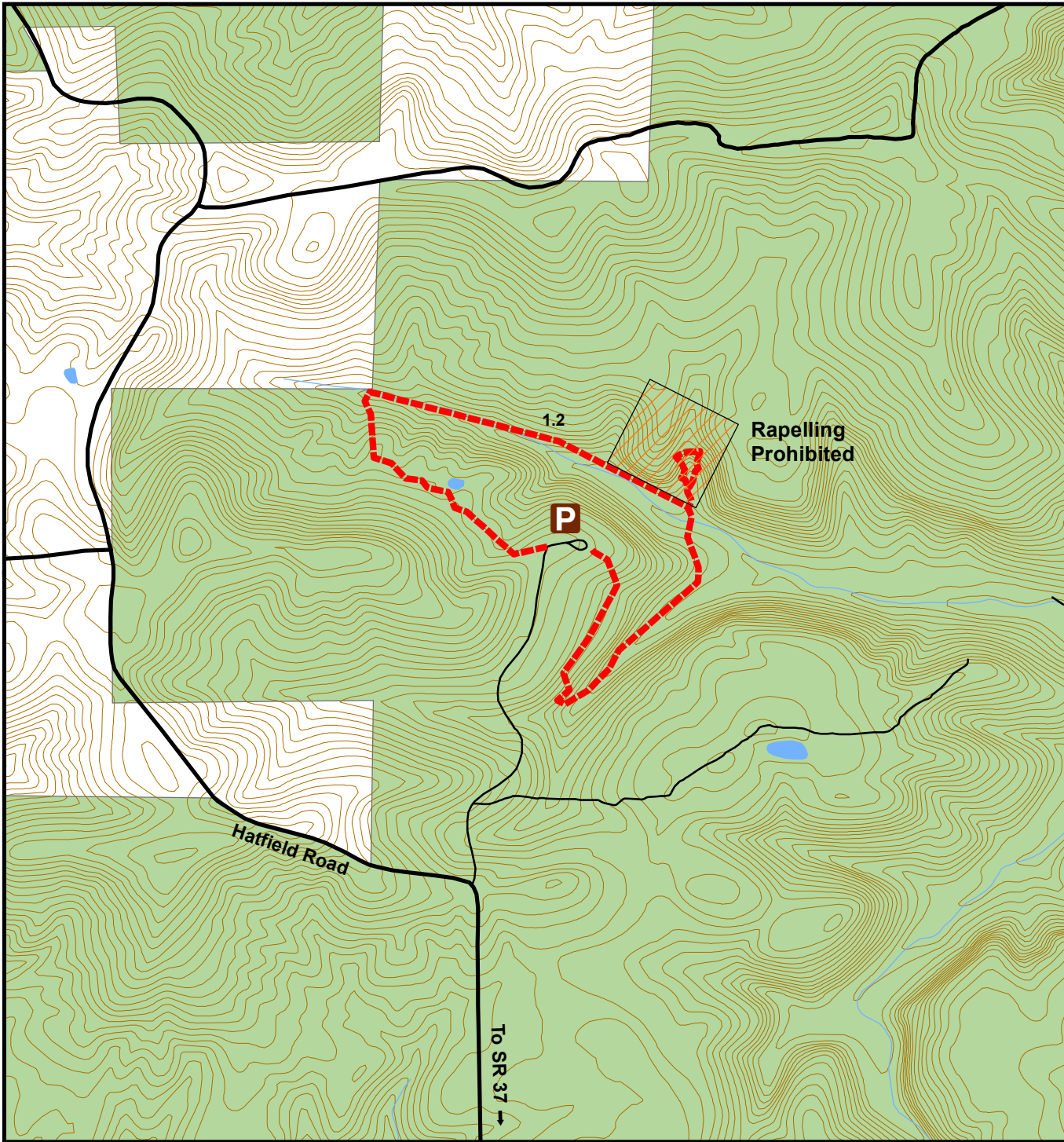
Hoosier National Forest    Tell City Ranger District  
811 Constitution Ave.    248 15th Street  
Bedford, IN 47421    Tell City, IN 47586  
812-275-5987    812-547-7051

[www.fs.usda.gov/hoosier](http://www.fs.usda.gov/hoosier)

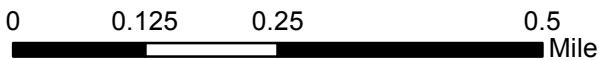
Toll Free: 1-866-302-4173

Federal Relay for deaf and hearing impaired:  
1-800-877-8339

# Hemlock Cliffs



USDA is an equal opportunity employer and provider.  
Large print copies available on request.



Look for these symbols to be sure you are on an official trail:








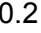
- Colored Dot or Diamond
- ◇ Diamond
-  Post with decals

Trails may be color coded to indicate use type:

- Blue - Hiking, Mountain Biking, and Horse Riding
- Yellow - Hiking and Mountain Biking Only
- White - Hiking Only



## Legend

-  Trail
-  Road
-  10' Contour
-  Stream
-  Water
-  Forest Service
-  Parking
-  0.2 Miles Between Intersections