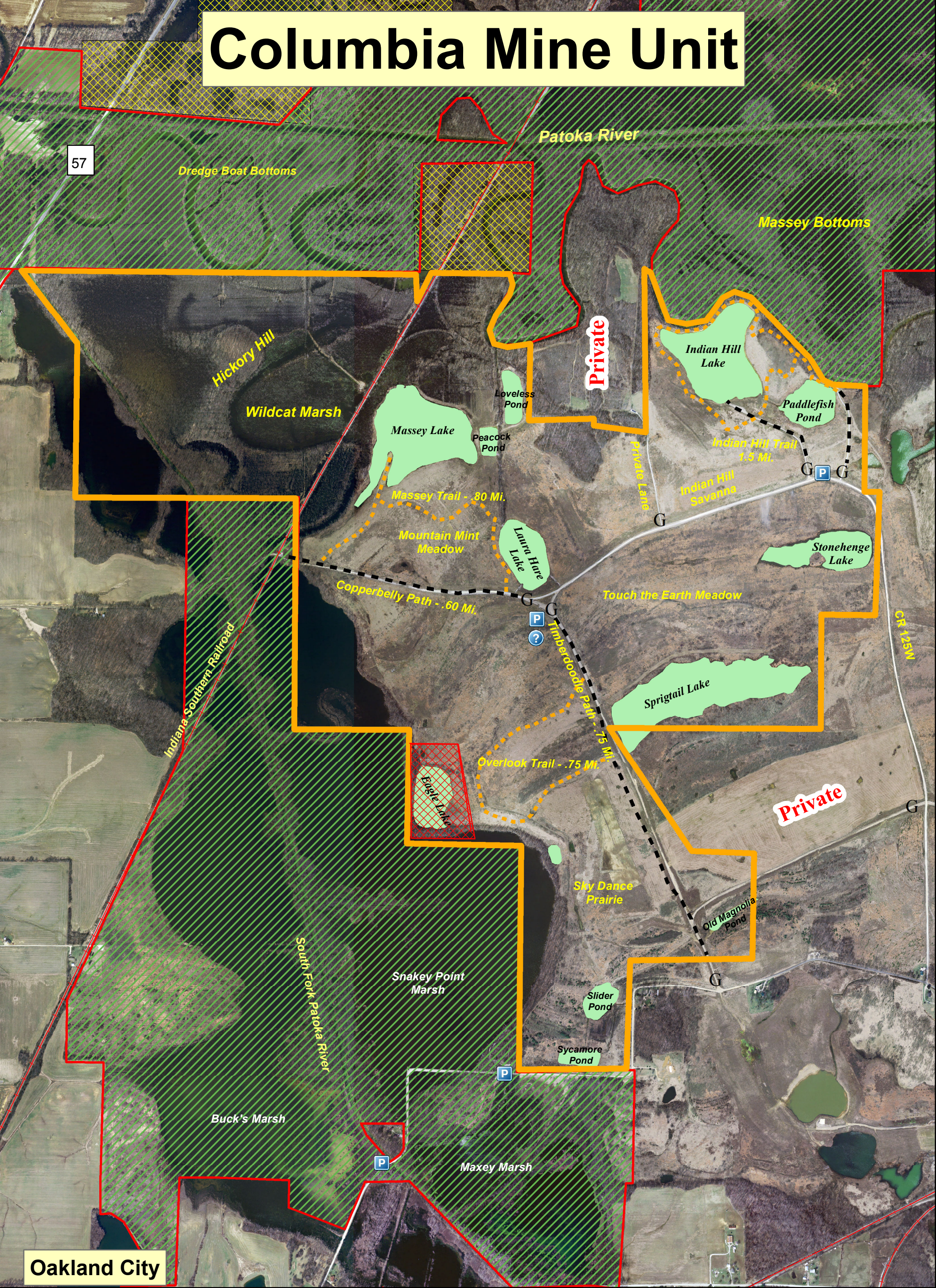
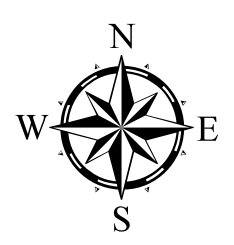


# Columbia Mine Unit



Oakland City

- Legend**
- Columbia Mine Unit
  - Patoka River NWR
  - G** Gate
  - Mowed Trails
  - Gravel Paths
  - Eagle Nesting Area - CLOSED Year Round
  - IN DNR**
  - DNR FISH AND WILDLIFE
  - DNR FORESTRY



# Columbia Mine Unit

## Public Use Regulations 2014-2015

### Patoka River National Wildlife Refuge and Management Area & Sycamore Land Trust

The Columbia Mine Unit consists of 1,043 acres in Pike and Gibson Counties, acquired for protection in 2012. It is private property owned by Sycamore Land Trust, a southern Indiana nonprofit land conservancy, and managed as part of the larger Patoka River National Wildlife Refuge by the United States Fish and Wildlife Service.

Public access is permitted across the Columbia Mine Unit, with the exceptions listed below:

**The Columbia Mine Unit is closed to all hunting and fishing, until an environmental assessment and hunting and fishing plan are completed for these lands. The earliest possible date for these uses will be the fall of 2015.**

**The Eagle Nesting Area, shown on the unit map and signed in the field, is closed year-round.**

**The Columbia Mine Unit is open from one-half hour before legal sunrise to one-half hour after legal sunset.**

**The following activities are prohibited on the Columbia Mine Unit:**

Littering/dumping.

Campfires.

Use or possession of alcoholic beverages.

Swimming.

Target practice or random shooting.

Use of fireworks.

Camping/overnight parking.

Dogs must be leashed at all times.

Taking or attempting to take any wildlife or wildlife parts (e.g. shed antlers).

Trapping furbearers or other animals.

Taking, cutting or destroying any plants or parts thereof including flowers, fruits, nuts, fungi, herbs, shrubs, or trees.

Use of off-road vehicles, horses, mules, llamas, and bicycles other than on maintained county road right-of-ways.

Blocking gates or roadways with vehicles.

Searching for or removing any object of antiquity including arrowheads, pottery, beads, etc. Use of metal detectors or digging for artifacts.

Use of airboats and gasoline-powered boat motors.

Boats must be clean and free of any plant or animal material or water before entering water bodies.

**-Patoka River NWR Headquarters, 510 ½ West Morton Street, Oakland City, Indiana or phone (812) 749-3199.**

**-Sycamore Land Trust may be reached at (812) 336-5382 or at [info@sycamorelandtrust.org](mailto:info@sycamorelandtrust.org).**